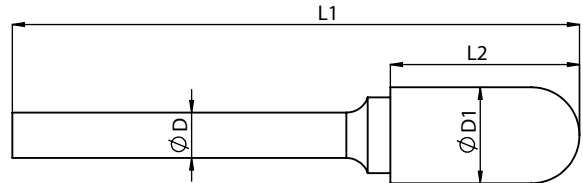


SC
Cylindrical with radius end


3 mm Shank					Standard cut (Single cut)	Supreme cut (Double cut)	Deluxe cut (Diamond cut)	Aluma Cut	Coarse Cut	CTI Number
Head Diameter	Head length	Overall Length	Shank Dia	Tool No	EDP No.	EDP No.	EDP No.	EDP No.	EDP No.	
ØD1	L2	L1	D		EDP No.	EDP No.	EDP No.	EDP No.	EDP No.	
2.5	11	38	3	MB0*	FAC0200542	FAC0200543	FAC0200544	–	–	SC-41M
3	16	38	3	MB1*	FAC0200545	FAC0200547	FAC0200548	–	–	SC-42M
3	16	50	3	MB1L*	FAC0200549	FAC0200550	FAC0200551	–	–	SC-42ML2
3	16	75	3	MB1L1*	FAC0200552	FAC0200553	FAC0200554	–	–	SC-43ML3
6.3	12.7	38	3	MB2	FAC0200556	FAC0200557	FAC0200558	–	–	SC-51
6.3	12.7	50	3	MB2L	FAC0200559	FAC0200560	FAC0200561	–	–	SC-51L2

6 mm Shank					Standard cut (Single cut)	Supreme cut (Double cut)	Deluxe cut (Diamond cut)	Aluma Cut	Coarse Cut	CTI Number
Head Diameter	Head length	Overall Length	Shank Dia	Tool No	EDP No.	EDP No.	EDP No.	EDP No.	EDP No.	
ØD1	L2	L1	D		EDP No.	EDP No.	EDP No.	EDP No.	EDP No.	
3	16	66	6	B0	FAC0200074	FAC0200075	FAC0200076	–	–	SC-12M
6	20	50	6	B1*	FAC0200077	FAC0200078	FAC0200079	–	–	–
6	20	70	6	B1	FAC0200083	FAC0201707	FAC0201219	–	–	–
8	19	69	6	B2	FAC0200097	FAC0200101	FAC0200099	FAC0200112	–	SC-2M
9.5	19	69	6	B3	FAC0200113	FAC0200115	FAC0200117	FAC0200131	–	SC-3M
12.7	19	69	6	B4	FAC0200132	FAC0200134	FAC0200136	FAC0200144	–	–
16	25	75	6	B5	FAC0200145	FAC0200147	FAC0200149	FAC0200155	–	SC-6M
12.7	25	75	6	B6	FAC0200157	FAC0200159	FAC0200161	FAC0200173	–	SC-5M
4	19	70	6	B7	FAC0200175	FAC0200176	FAC0200177	–	–	SC-13M
5	19	70	6	B8	FAC0200178	FAC0200179	FAC0200180	–	–	SC-14M
19	25	75	6	B9	FAC0200181	FAC0200183	FAC0200185	FAC0200187	–	SC-7M
25	25	75	6	B10	FAC0200189	FAC0200191	FAC0200193	FAC0200195	–	SC-9M
6.3	16	66	6	B11	FAC0200197	FAC0200198	FAC0200199	–	–	SC-1M
10	25	75	6	B12	FAC0200200	FAC0200201	FAC0200202	FAC0200203	–	SC-3MZ
11	25	75	6	B13	FAC0200204	FAC0200205	FAC0200206	FAC0200207	–	SC-4M

* indicates full carbide burrs

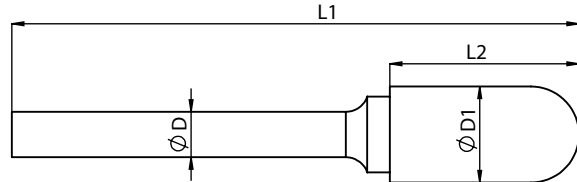
Note:

- Ask your local representative about our long shank program –Available in 4",5",6",7",8",9",10",11" & 12"
- All sizes available as a special in left hand cut
- Coarse cut burrs available on request



SC

Cylindrical with radius end



CARBIDE BURRS



8 mm Shank					Tool No	Standard cut (Single cut) EDP No.	Supreme cut (Double cut) EDP No.	Deluxe cut (Diamond cut) EDP No.	Aluma Cut EDP No.	Coarse Cut EDP No.	CTI Number
Head Diameter	Head length	Overall Length	Shank Dia								
Ø D1	L2	L1	D								
8	19	69	8	B2Z	FAC0200098	FAC0200100	FAC0201819	-	-	SC-2M8	
9.5	19	69	8	B3Z	FAC0200114	FAC0200116	FAC0201823	-	-	SC-3M8	
12.7	19	69	8	B4Z	FAC0200133	FAC0200135	FAC0200137	-	-	-	
16	25	75	8	B5Z	FAC0200146	FAC0200148	FAC0200150	FAC0200156	-	SC-6M8	
12.7	25	75	8	B6Z	FAC0200158	FAC0200160	FAC0201830	FAC0200174	-	SC-5M8	
19	25	75	8	B9Z	FAC0200182	FAC0200184	FAC0200186	FAC0200188	-	SC-7M8	
25	25	75	8	B10Z	FAC0200190	FAC0200192	FAC0200194	FAC0200196	-	SC-9M8	

1/8 inch Shank										
Head Diameter	Head length	Overall Length	Shank Dia	Tool No	Standard cut (Single cut) EDP No.	Supreme cut (Double cut) EDP No.	Deluxe cut (Diamond cut) EDP No.	Aluma Cut EDP No.	Coarse Cut EDP No.	CTI Number
3/32	7/16	1-1/2	1/8	MB0I*	FAC0201948	FAC0201950	FAC0201949	-	-	SC-41
1/8	9/16	1-1/2	1/8	MB1I*	FAC0201951	FAC0201953	FAC0201952	-	-	SC-42
1/4	1/2	1-1/2	1/8	MB2I	FAC0201954	FAC0201956	FAC0201955	-	-	SC-51

1/4 inch Shank										
Head Diameter	Head length	Overall Length	Shank Dia	Tool No	Standard cut (Single cut) EDP No.	Supreme cut (Double cut) EDP No.	Deluxe cut (Diamond cut) EDP No.	Aluma Cut EDP No.	Coarse Cut EDP No.	CTI Number
1/8	5/8	2-5/8	1/4	B0I	FAC0201807	FAC0201809	FAC0201808	-	-	SC-12
3/16	3/4	2-3/4	1/4	B8I	FAC0201831	FAC0201833	FAC0201832	-	-	SC-14
1/4	5/8	2-5/8	1/4	B11I	FAC0201810	FAC0201812	FAC0201811	-	-	SC-1
5/16	3/4	2-3/4	1/4	B2I	FAC0201816	FAC0201818	FAC0201817	-	-	SC-2
3/8	3/4	2-3/4	1/4	B3I	FAC0201820	FAC0201822	FAC0201821	-	-	SC-3
7/16	1	3	1/4	B13I	FAC0201813	FAC0201815	FAC0201814	-	-	SC-4
1/2	1	3	1/4	B6I	FAC0201827	FAC0201829	FAC0201828	-	-	SC-5
5/8	1	3	1/4	B5I	FAC0201824	FAC0201826	FAC0201825	-	-	SC-6
3/4	1	3	1/4	B9I	FAC0201834	FAC0201836	FAC0201835	-	-	SC-7

* indicates full carbide burrs

Note:

- Ask your local representative about our long shank program –Available in 4",5",6",7",8",9",10",11" & 12"
- All sizes available as a special in left hand cut
- Coarse cut burrs available on request